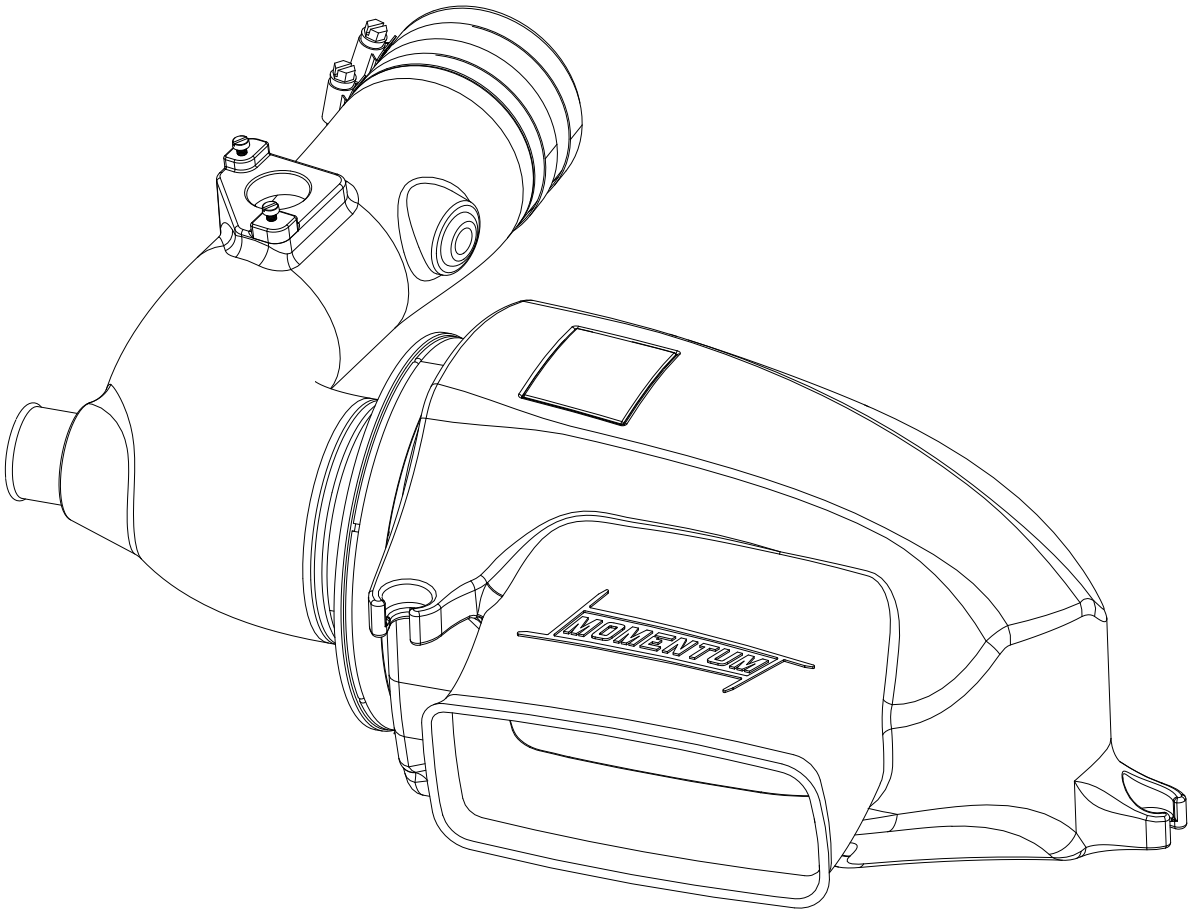


Reddy®



Instruction Manual P/N: 12519101

Make: **Scion/Subaru/Toyota** Model: **FR-S/BRZ/86** Year: **2013** Engine: **H4-2.0L**



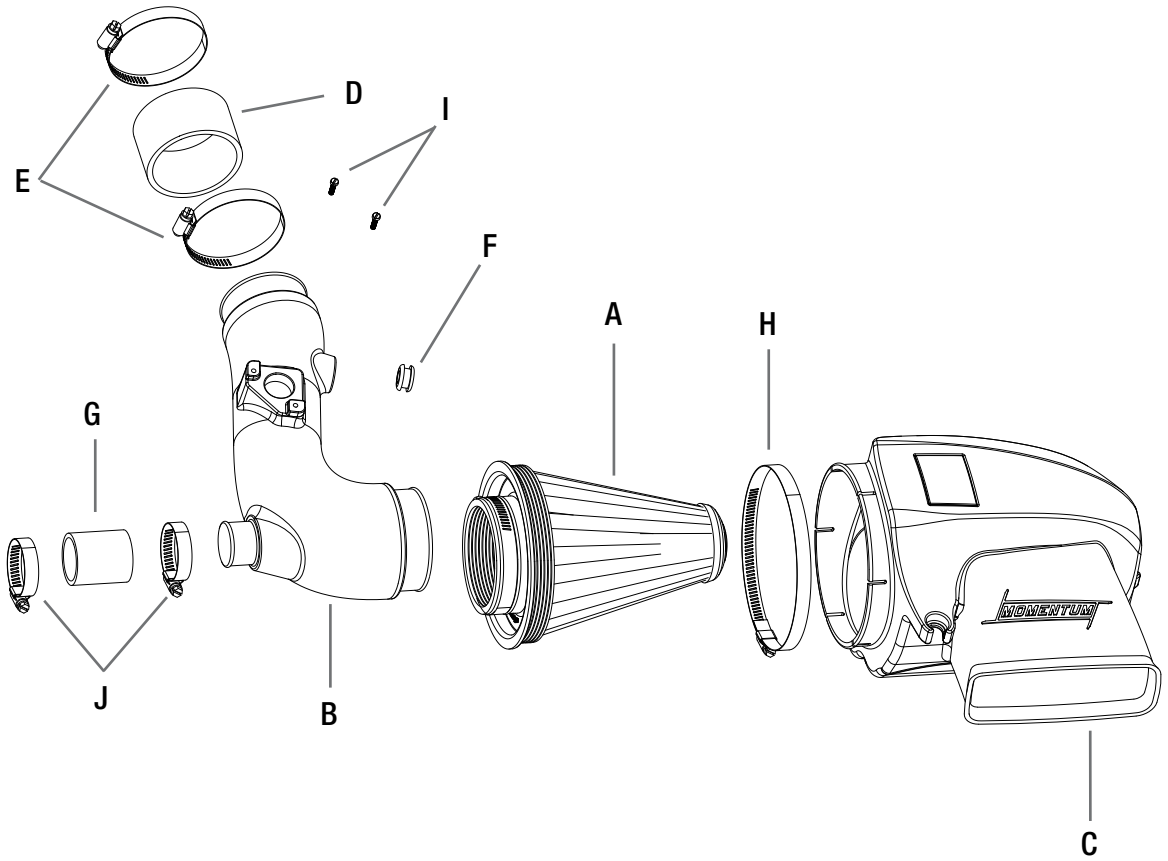
- Please read the entire instruction manual before proceeding.
- Ensure all components listed are present.
- If you are missing any of the components, call customer support at 949-588-8300.
- Ensure you have all necessary tools before proceeding.
- Do not attempt to work on your vehicle when the engine is hot.
- Disconnect the negative battery terminal before proceeding.
- Retain factory parts for future use.

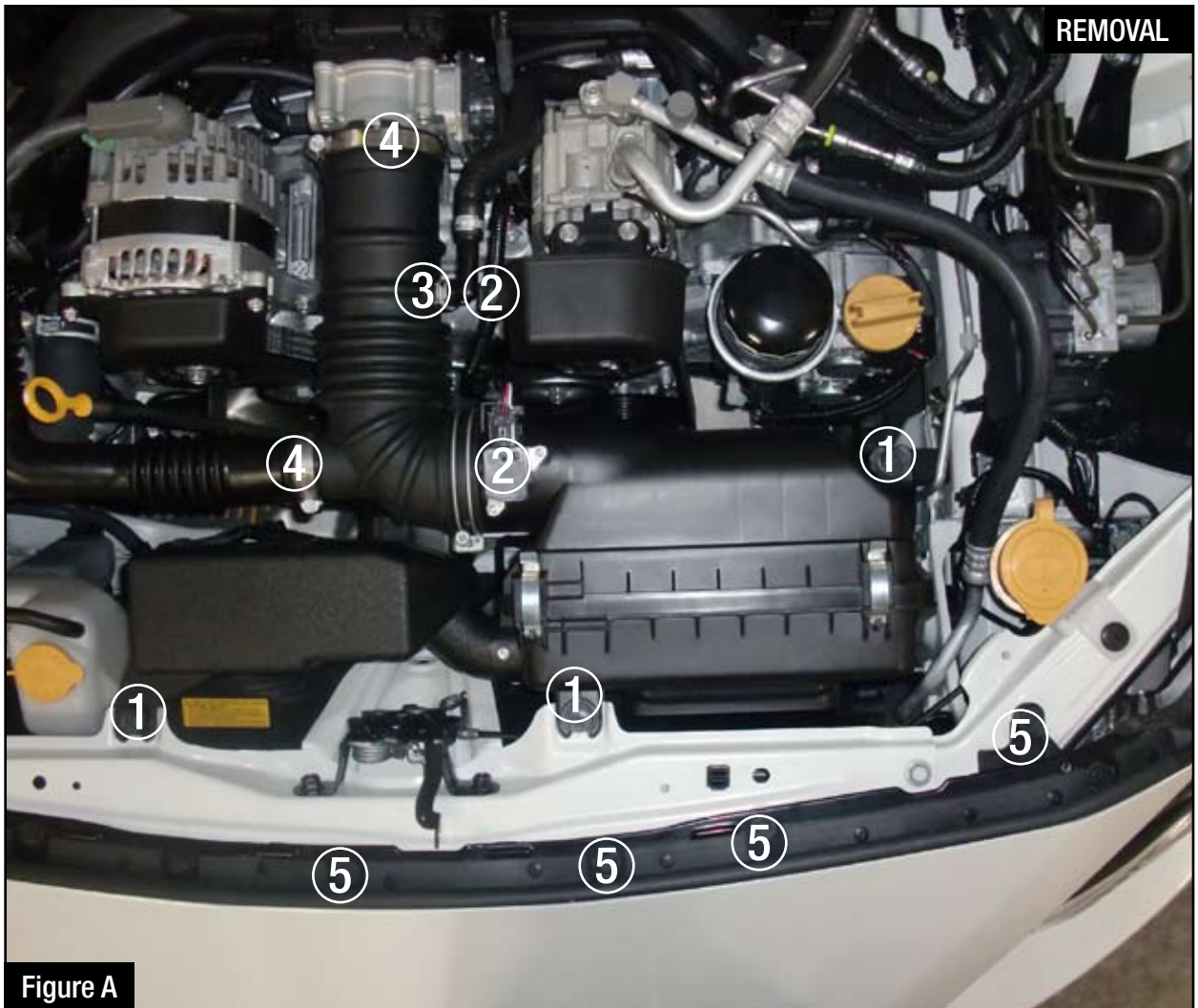
Label	Qty.	Description	Part Number
A	1	Pro Dry S Air Filter	61-90129
B	1	Tube	05-T2013B1
C	1	Housing	05-T2013B2
D	1	Coupling 3"ID x 2"L	05-01106
E	2	Clamp, 048	03-50007
F	1	Grommet	03-50033
G	1	Coupling 1-1/2"ID x 2"L	05-01198
H	1	Clamp, 096	03-50003
I	2	Screw, M4 x .7 x 8	03-50034
J	2	Mini Clamp, 024	03-50093

Installation will require the following tools:

Phillips screw driver, 8mm nut driver, ratchet, extension, 10mm socket & pliers

Note: Legal in California for use on race vehicles only. The use of this device on vehicles used on public streets or highways is strictly prohibited in California and others states that have adopted California emission regulations.





Refer to Figure A for step 1-5

Step 1: Remove the three 10mm bolts on the OE housing (1).

Step 2: Unplug the MAF sensor and unclip the wire harness from the OE intake tube (2).

Step 3: Remove the crank case hose from the OE tube (3).

Step 4: Loosen the clamp off the throttle body and cabin sound chamber tube, then remove the OE intake system out of the vehicle (4).

Step 5: Remove the five 10mm bolts and two push clips on the front bumper rail (5).



Figure B

Refer to Figure B for step 6

Step 6: Remove the three push clips on the driver side fender well (6) connecting to the bumper, and also the one by the amber light (7).



Figure C

Refer to Figure C for steps 7

Step 7: With a flat head screwdriver push on the bottom side of the amber and pry out. Pop out the bottom side, then remove the rest of the amber light.



Figure D

Refer to Figure D for steps 8-9

Step 8: Gently pull the right side of the bumper to gain access to the OE scoop.

Step 9: Remove the OE scoop off the vehicle by removing the two 10mm bolts (8) and install bumper back on.



Figure E

Refer to Figure E for steps 10-13

Step 10: Remove two of the OE grommets off the OE housing that you removed in step one and install them on the housing (Refer to top right photo).

Step 11: Install the large hose clamp onto the housing and air filter as shown (Refer to top right photo).

Step 12: Install the Housing into the vehicle using the OE hardware (9) .

Step 13: Place the silicone coupling onto the throttle body with the supplied clamps (10) .

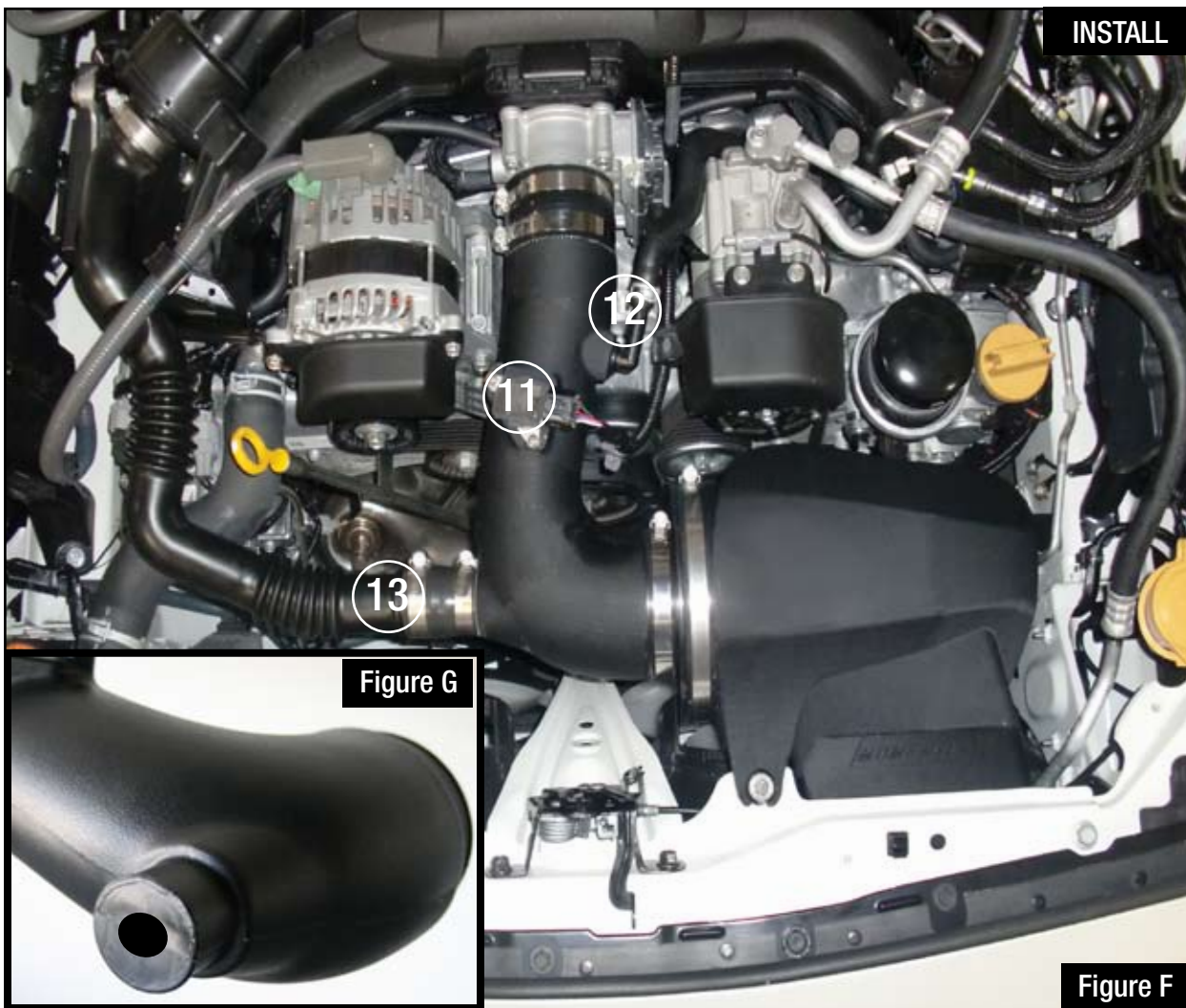


Figure G

Figure F

Refer to Figure F for steps 14-18

(If you would like to use the sound chamber, Drill out the intake tube as shown in Figure G)

Step 14: Install your intake tube into the vehicle.

Step 15: Remove the MAF sensor off the OE air box and install onto the tube with the supplied hardware (11).

Step 16: Install the supplied rubber grommet onto the intake tube (12) and reinstall your factory crank case vent line.

Step 17: Attach the sound chamber to the intake tube using the supplied coupling and clamps (13).

Step 18: Reconnect battery, your installation is now complete!

Pro DRY S Air Filter



P/N: TF-9019D

To purchase any of the items above, view airflow charts, dyno graphs, photos, and video; please go to GReddy.com.

Page left blank intentionally

***GR*Reddy**®

***GR*Reddy Performance Products**

9 Vanderbilt, Irvine CA 92618

TEL: 949.588.8300 • Tech@greddy.com