

# 1. Parts List

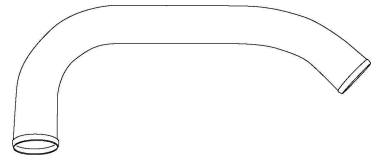
1.	Intercooler	(Type 15)								1
2.	Intake Pipe I-1	(50 Aluminum)								1
3.	"	I-2 (50 Aluminum)								1
4.	"	I-3 (50 Aluminum)								1
5.	"	I-4 (50 Aluminum)								1
6.	Suction Pipe	(Aluminum Elbow)								1
7.	Rubber Hose	50 x 70mm Straight								4
8.	"	50 - 60 (Reducer)								4
9.	Hose Band	50 Tridon #32								12
10.	"	60 Tridon #36								4
11.	"	80 Tridon #46								2
12.	Intercooler Bracket A									1 set
13.	Intercooler Bracket B									1 set
14.	Aluminum Spacer	t=8mm								2
15.	Airinx AY-S									2
16.	Airinx Adapter S80									2
17.	Zip Ties	150mm								5
18.	6mm X 15mm	P=1.0	Stainless	B	S/W	F/W	-			4
19.	6mm X 15mm	P=1.0	Stainless	B	S/W	F/W	N			4
20.	6mm X 25mm	P=1.0	Stainless Stud	B	S/W	F/W	N			4
21.	8mm X 15mm	P=1.25	Stainless	B	S/W	F/W	-			2



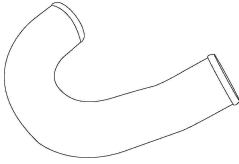
1



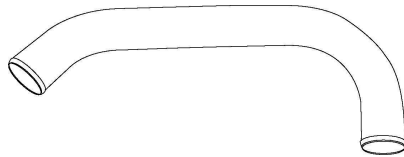
2



3



4



5



6



7



8



9 - 11



12



13



14



15



16



17



18 - 21

## 2. Stock Parts Removal

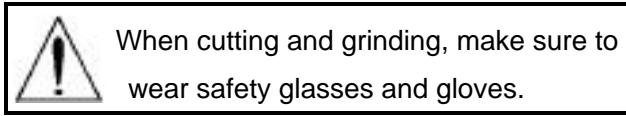
**Please refer to the factory service manual for the proper stock parts removal.**

- 2-1 Disconnect the negative terminal of the battery.
- 2-2 Remove the under engine cover and the inner fender protector.
- 2-3 Remove the front bumper and the front finisher.
- 2-4 Disconnect the Airflow meter connector and remove the air filter assembly.
- 2-5 Remove the airflow meter from the air filter assembly.
- 2-6 Remove the bumper reinforcement and the condenser air duct.
- 2-7 Remove the Fog lamps off from the bumper reinforcement.
- 2-8 Remove the left and the right side horn.
- 2-9 Remove the factory intercooler and the intercooler hoses.

### 3. Kit Installation

#### 3-1 Body Modification

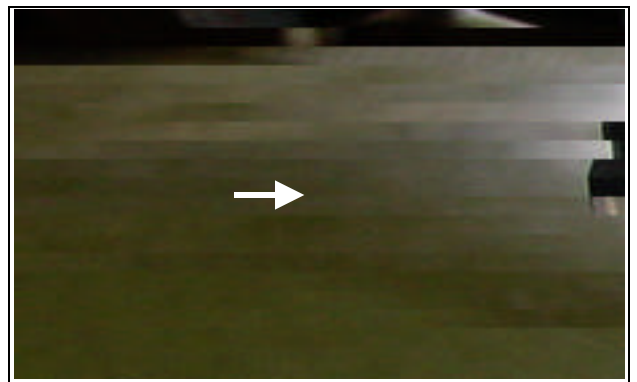
Cut the shaded area as shown.



#### 3-2 Auxiliary temp sensor relocation

Relocate the Auxiliary temp sensor and secure as shown.

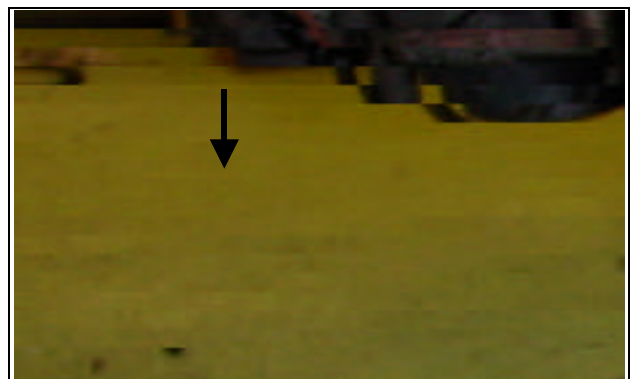
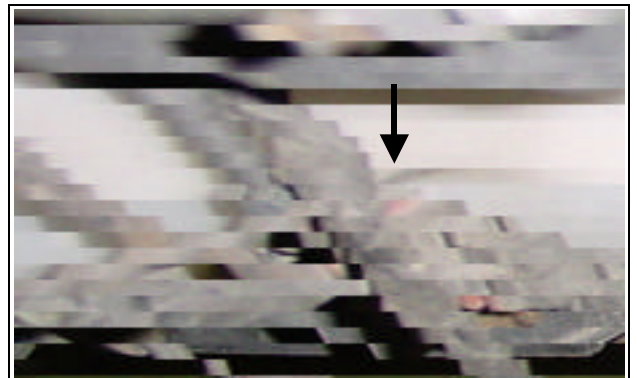
(Part # 17)



#### 3-3 Horn Relocation

Relocate the horn using the provided aluminum spacer and bolts as shown.

(Part # 14, 21)

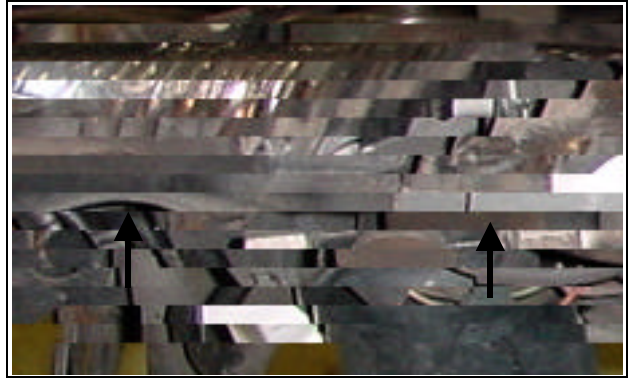


### 3-4 Intercooler Installation

(1) Install the intercooler bracket as shown.

Use factory bolts.

(Part # 12, 13, 18)

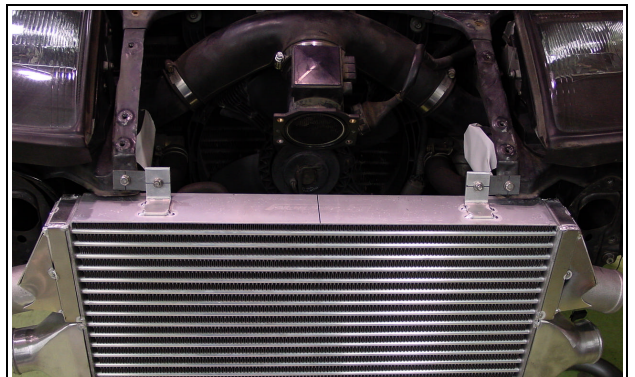


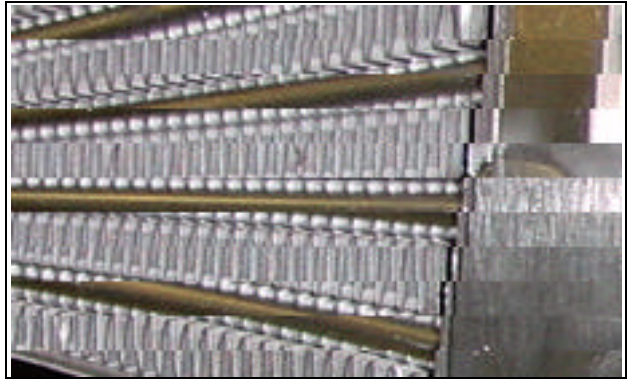
\*Long side to the body



(2) Mount the Inter cooler to the brackets installed in step (1).

(Part # 1, 19)

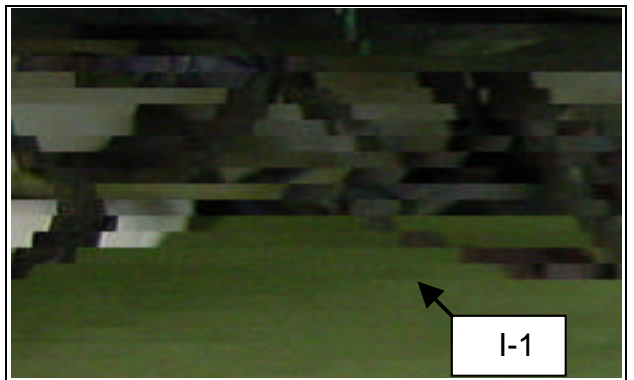




3-5 Intercooler piping installation.

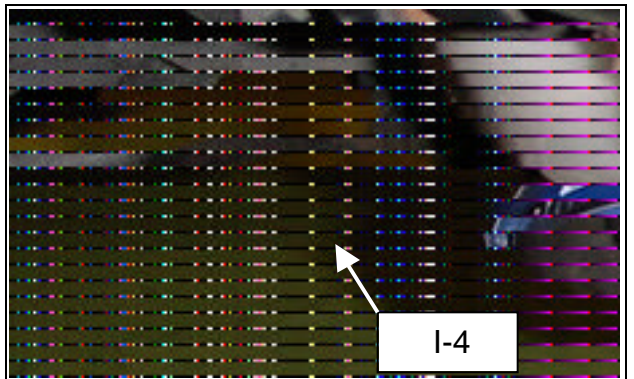
- (1) Install the I-1 pipe to the right bank as shown.

(Part # 2,7, 8, 9, 10 )



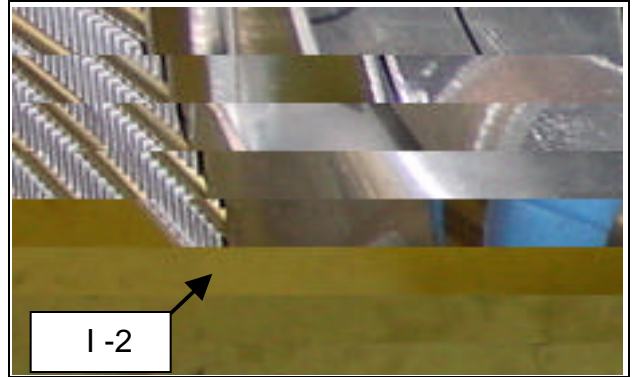
- (2) Install the I-4 Pipe from the inter cooler to the right bank throttle as shown.

(Part # 5, 7, 8, 9, 10)

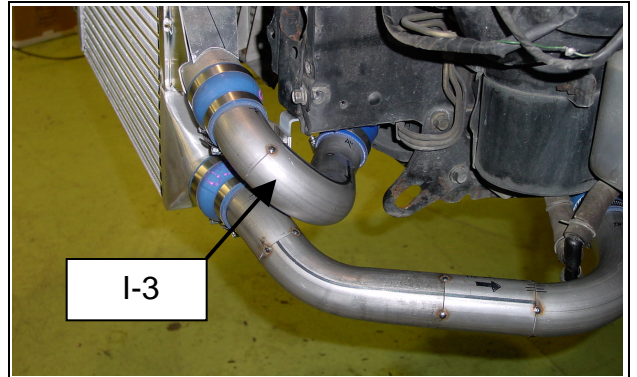




- (3) Install the I-2 Pipe from the inter cooler to the left bank throttle as shown.  
(Part # 3, 7, 8, 9, 10)

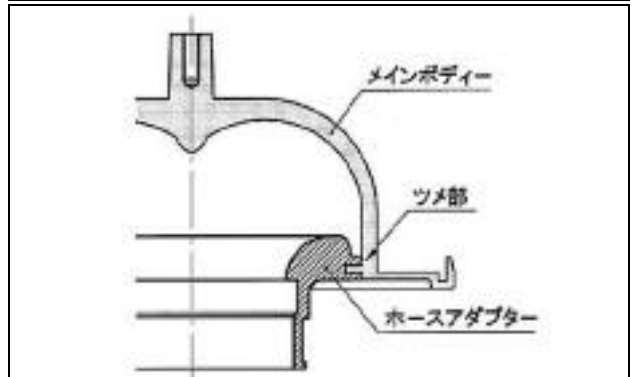


- (4) Install the I-3 pipe to the left bank as shown.  
(Part # 4, 7, 8, 9, 10)

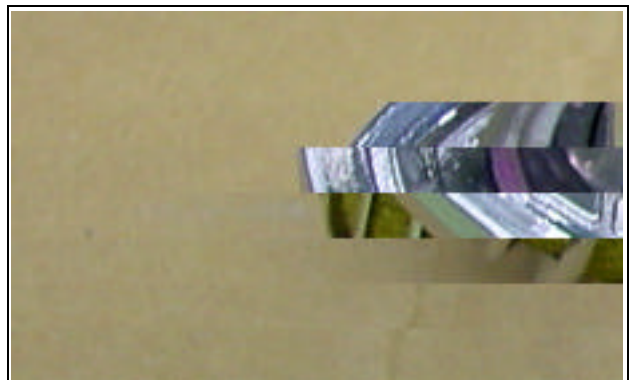


### 3-6 Suction pipe installation

- (1) Install the Airinx adapter to the Airinx.  
(Part # 15,16)



- (2) Install the Airinx and the airflow meter on to the suction pipe as shown.  
(Part # 11, 20)

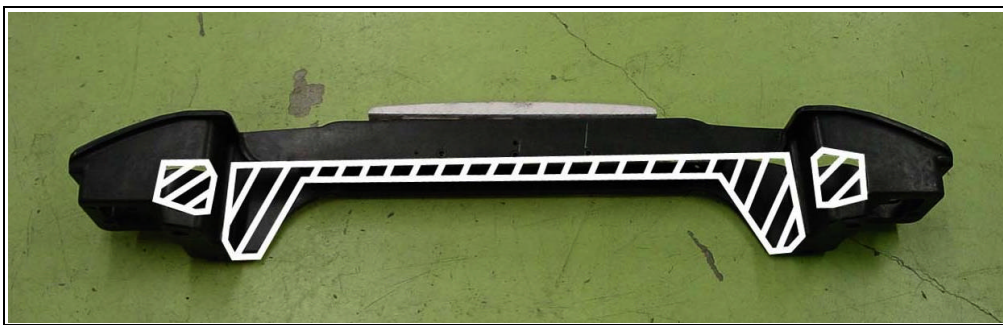


- (3) Install the Airinx assembly to the factory piping as shown.



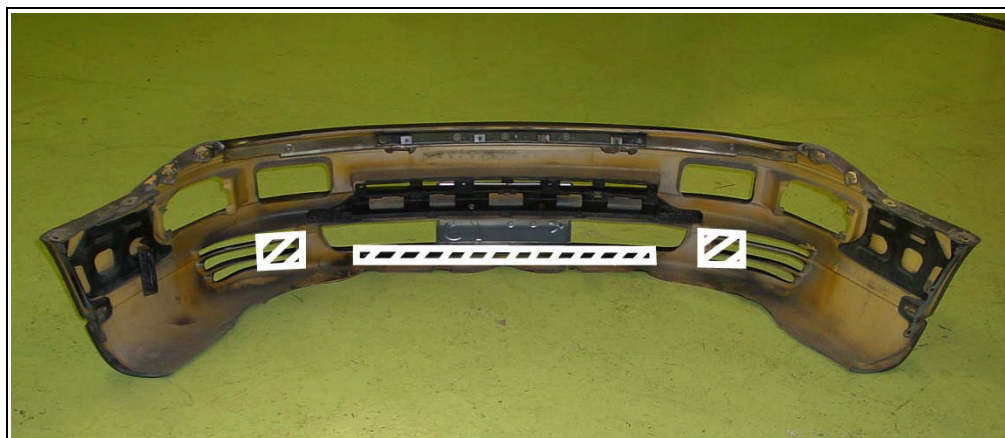
### 3-7 Bumper reinforcement modification and installation

- (1) Cut the shaded area on the bumper reinforcement as shown, and install the factory fog lights.
- (2) Install the bumper reinforcement back on with the factory hardware.



### 3-8 Bumper Modification and Installation

Cut the shaded area on the bumper as shown, and install it back on.





### 3-9 Undercover Modification

Cut the shaded area on the undercover as shown.



### 3-10 Start Engine

- ( 1 ) Check all the hose connections.
- ( 2 ) Connect the negative terminal on the battery and start the engine.
- ( 3 ) Check for any air leaks.
- ( 4 ) Install the modified undercover
- ( 5 ) Make sure that the light operate properly.